



A PLACE AT THE LAKE

Two brothers built a waterfront community with a focus on fun. Join them for a tour of their Smith Lake playground.



BELOW: Members of the Oakley Group, a commercial real estate brokerage firm, take a break to unwind at Silverrock Cove. From left to right: Zach Shippis, Barrett Oakley, David Oakley, Michael Whitten, Peter Drake.

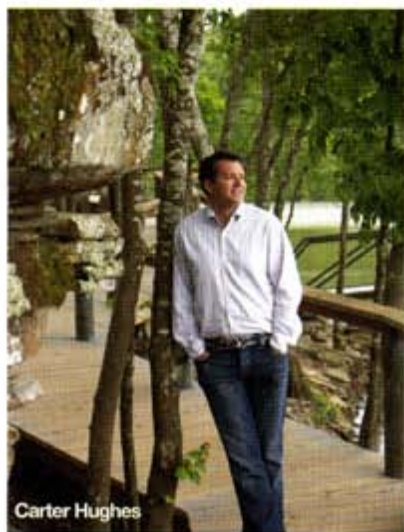


Text by CATHY STILL JOHNSON Photography by JEAN ALLSOPP

CARTER AND SCOTT HUGHES GREW UP ON LEWIS SMITH LAKE.

Their parents had an enviable plot of land and a vista that anyone would consider lucky to own—except their sons. “We went to the lake every weekend and Dad always had us working—fixing something on the house, mowing the lawn, or pulling weeds. There was always so much to do,” Carter says. “We didn’t even have friends around to play with. The ping-pong table was the best thing we had going.”

Now as adults, Carter and Scott still find themselves on Smith Lake—but without the hassle of chores. Developers of Silverrock Cove, the brothers fashioned a place where fun—not work—is their mantra. The 85-acre enclave, designed in the spirit of traditional neighborhood developments, includes a



Carter Hughes



Louis Nequette and Doug Davis

Second Home Comforts

Doug Davis and Paige Schnell of Tracery Interiors share their must-haves:

Plenty of sleeping spaces. *Think nooks for daybeds, bunks, and pull-out sofas.*

Storage for outdoor gear. *Designate a closet for rafts, toys, and sports equipment.*

Insect protection. *Every Southerner needs a screened porch (and plenty of bug spray).*

Ceiling fans and outdoor speakers. *Keep cool air circulating and good tunes playing.*

Comfortable, durable furniture for indoors and outside. *"There's no room at a beach house or lake house for something you don't want to sit on or use," Doug says.*

Wall hooks. *For everything from towels to swimsuits to tote bags.*

A double washer and dryer. *After hosting guests, there's always plenty of laundry.*

Grill or outdoor kitchen. *Nothing beats grilling fresh-caught fish after a day on the water.*

Outdoor showers. *Both a necessity and luxury.*

Plenty of windows. *Essential for capturing gorgeous water views.*



The community clubhouse has a wall of doors on both sides, which swing out to create an open-air pavilion. For the siding, Dungan-Nequette Architecture used chipped painted wood reclaimed from a barn in Wisconsin.





centrally located clubhouse, an infinity pool overlooking the shore, and porch-adorned homes. Located on a peninsula, the community's houses all offer striking views of the glittering, peaceful lake.

Teaming with Dungan-Nequette Architects, JK Terry Landscape Architects, and Paige Schnell and Doug Davis of Tracery Interiors, the Hughes brothers carefully sculpted their development around the natural topography. The area is unusual for Smith Lake because it's flat—there are no ski lifts or steep steps to negotiate to reach the water. "When we first walked the beautifully wooded site, the primary goal of this community emerged immediately: keep this place special by maintaining as much of God's work as possible," Louis Nequette says. Indeed they did, taking particular care not to distract from the environment with their architecture.

The homes, simple and comfortably rustic, bear little adornment or color. "We wanted the focus to be on the lake, not the houses," Doug says. "There are two primary color palettes and finish packages inside and out so the homes have a consistent look that doesn't distract from the views."

Homes are connected by sidewalks on the street side and a boardwalk on the lakeside. "Louis intentionally put the entry and porches on the lakeside so visitors and owners could have that view immediately," Doug says.

Inside Carter's house, finishes and materials are natural. "We tended towards pine floors, plank walls, and light furniture in natural fabrics and materials," says Doug. "We didn't do anything overtly lakey; instead we opted for the mood and added a little twist with accent colors and accessories." Artwork from Birmingham's Loretta Goodwin Gallery represents rural character, but there's not a single fisherman in sight.

Yet there's plenty of lake stuff to do at Silverrock. The community fulfills a wish list of amenities: dry dock boat concierge service, plenty of bays for day docking or swimming, and, of course, a clubhouse with a good old-fashioned ping-pong table.

RESOURCES: architect: **LOUIS NEQUETTE, DUNGAN-NEQUETTE ARCHITECTS** • 205.322.6455 • www.dungan-nequette.com interiors: **PAIGE SCHNELL AND DOUG DAVIS, TRACERY INTERIORS** • Birmingham, AL and Rosemary Beach, FL • 205.329.7030 • www.traceryinteriors.com signage: **THE G BRAND** • 205.329.7023 floors and wood plank walls: **HUGHES LUMBER COMPANY** • custom finish • www.hugheslumber.net window color: Benjamin Moore #2137-20, Chair Brown • www.benjaminmoore.com furnishings and accents: **TRACERY** • Rosemary Beach, FL • 850.231.6755 art: **LORETTA GOODWIN GALLERY AND CO.** • Birmingham, AL • 205.328.1761 drapery rods: **POTTERY BARN** • www.potterybarn.com



Tracery Interiors created relaxed, airy spaces with intriguing décor for this home in Silverock Cove. In the living room, a simply framed farmhouse scene pairs beautifully with the stone fireplace. A whitewashed branch coffee table reflects the surrounding environment. "Because there is so much wood, we wanted to keep fabrics and accent pieces lighter," says Tracery Interiors' Doug Davis. He and his partner, Paige Schnell, selected much of the artwork from Birmingham's Loretta Goodwin Gallery. They also chose metal chairs and barstools so family and friends can go straight from the water to the dining table for meals without worrying about harming fine upholstery. **FACING PAGE:** Olive-green cabinetry, warm wood, and granite surfaces bring the outdoors into the kitchen.

